

GREEN PARK FESTIVAL ZONE

Prudential RideLondon is proud to host the **London Trials Championship presented by Buxton**. Top stunt rider Andrei Burton and his world class team of male and female champions take on the world championship standard course which includes a series of breathtaking replica iconic buildings as obstacles.

- **20" Modified Elite Trials:** 10:30-12:00
- **Women's Trials:** 12:30-13:00
- **26" MTB Elite Trials:** 13:30-15:00
- **Guinness World Record Attempts:** 15:30

Trial Biking - beginner's obstacle trails.
Go Ride racing with coaches from British Cycling.
Bikeworks - showcasing all-inclusive

cycling and adapted cycles on a unique cycling track.
Big screen with all day entertainment.
Exchanging Places - sit in the driver's seat of an HGV to get a better understanding of what the driver can and can't see.
Kids' Zone - indoor cycle-themed arts and crafts including customising your tabard, outdoor kids games, bling your bike and entertainers.
Outdoor games including giant Jenga, Connect Four, table football and lots more.
Activity areas presented by Prudential, Skoda, Continental, Silverline, Cannondale and Amstel.
Cycle Food Court with healthy food options.
Strider Learn to Ride Village with baby rocking, toddler adventure zone, Special Educational Needs area and free lessons for children aged three to seven years.

LINCOLN'S INN FIELDS FESTIVAL ZONE

Picnic zone.
Classical string quartet on the bandstand.
Penny Farthing taster rides.
Outdoor games.
Cycle-themed face painting for children.
Benugo Cafe.

GUILDHALL YARD FESTIVAL ZONE

Voodoo Unicycles - the world's only stunt unicycle team will amaze you with their stunts and tricks.
Bike polo with pro matches and polo try-outs for spectators hosted by the London Hardcourt Bike Polo Association.
Pedal-powered Scalextrix.
Inner Tube Challenge.
Pedal-powered Watt Challenge.
Pedal-powered juice bar - pedal to produce your own tasty smoothie.
Pedal-powered sound - Be the DJ and entertain with some pedal-powered sounds and beats.

LEADENHALL MARKET FESTIVAL ZONE

The Handlebards - an energetic, charmingly chaotic and environmentally sustainable performance of Shakespeare on bicycles.
Big screen with all-day entertainment.
Cycle Cinema - pedal-powered screenings for cinema fans.
CLIF Bar - take on the wrapper grab game, have a picture at the photo booth and enjoy some yummy samples.
Local Traders: Offering a great mix of food and drink.

SATURDAY 28 JULY

09:00
 Prudential RideLondon FreeCycle route & Festival Zones open

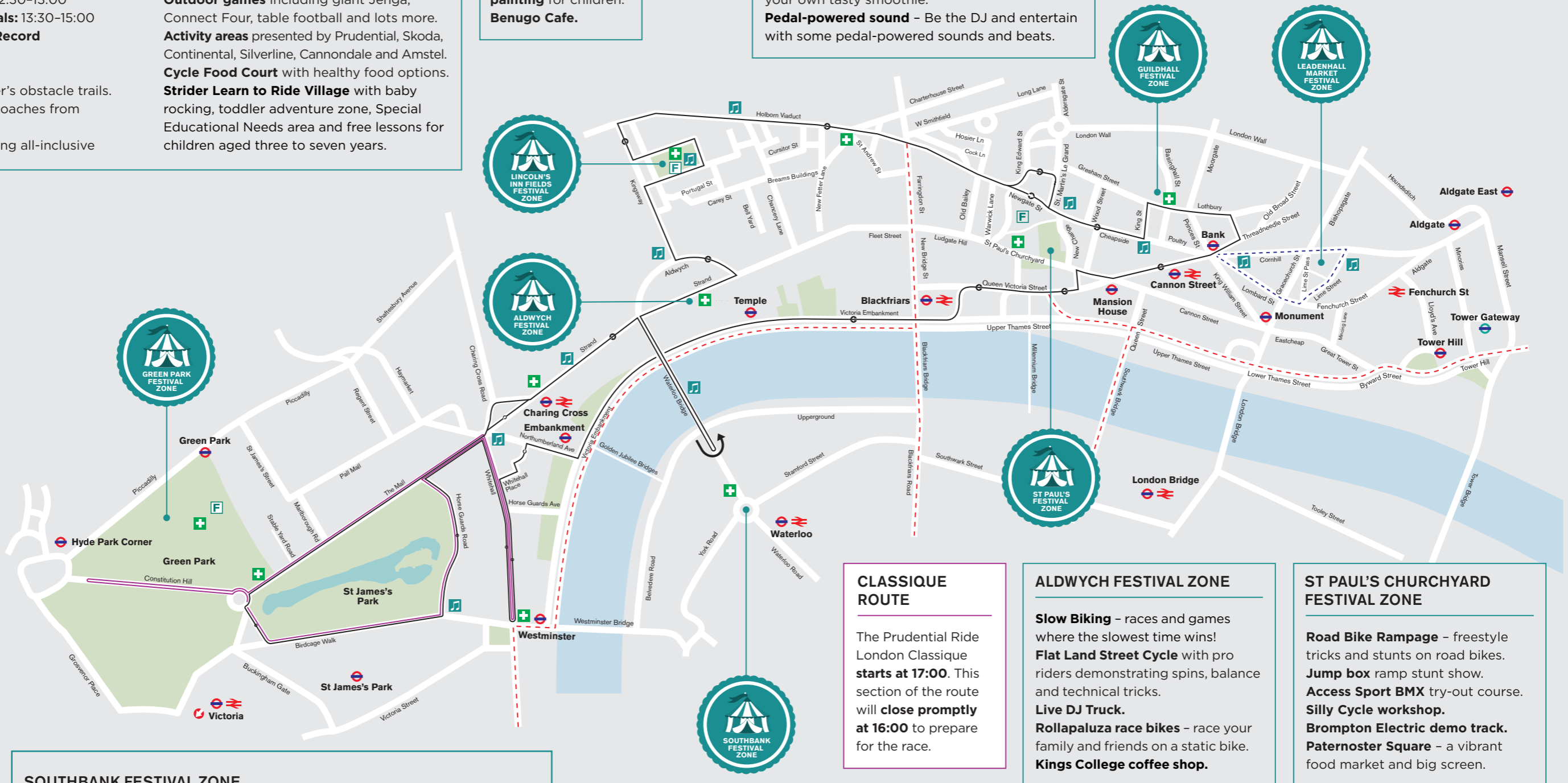
14:00
 Busy period

16:00
 Prudential RideLondon FreeCycle route & Festival Zones close. Stay in central London to watch the following races:

17:00
 Prudential RideLondon Classique pro women's race

19:15
 Brompton World Championship Final

19:50
 Prudential RideLondon Handcycle Grand Prix



SOUTHBANK FESTIVAL ZONE

Freestyle Stunt Show - an unbelievable showcase of skill, balance and style on wheels with shows throughout the day from 10:00-16:00. Make sure you stay for lessons and tips between each stunt show.
Puncture Kit - don't miss the drumming cyclist.
Rollapaluzza races - race your family and friends on a static race bike.

CLASSIQUE ROUTE

The Prudential RideLondon Classique starts at 17:00. This section of the route will close promptly at 16:00 to prepare for the race.

ALDWYCH FESTIVAL ZONE

Slow Biking - races and games where the slowest time wins!
Flat Land Street Cycle with pro riders demonstrating spins, balance and technical tricks.
Live DJ Truck.
Rollapaluzza race bikes - race your family and friends on a static bike.
Kings College coffee shop.

ST PAUL'S CHURCHYARD FESTIVAL ZONE

Road Bike Rampage - freestyle tricks and stunts on road bikes.
Jump box ramp stunt show.
Access Sport BMX try-out course.
Silly Cycle workshop.
Brompton Electric demo track.
Paternoster Square - a vibrant food market and big screen.

KEY

- Prudential RideLondon FreeCycle route (8 miles)
- Prudential RideLondon FreeCycle Explore route
- Cycle Superhighway
- Prudential RideLondon Classique route
- First Aid points
- Band
- Food

Riders can join at any point along the route